

NO ADDED SUGARS

NO ARTIFICIAL FLAVOURED SYRUPS

NO ARTIFICIAL COLOURING

NO PRESERVATIVES

# little BECA TEA

Bangsar South

Tap anywhere to order

HOT & COLD BREWS | TEA MIXOLOGY | DISTILLED BOTANICALS

## HOW TO CHOOSE OUR TEAS

### WOULD YOU EAT AN OXIDIZED APPLE?

Maybe not, since it can taste quite yucky.

Browning from exposure to oxygen after being cut



### BUT WE BET YOU WOULD LOVE AN OXIDIZED TEA LEAF!

Tea comes from only one plant: The Camellia Sinensis

MINIMAL OXIDATION = White Tea

MAXIMUM OXIDATION = Black and Pu'er Teas

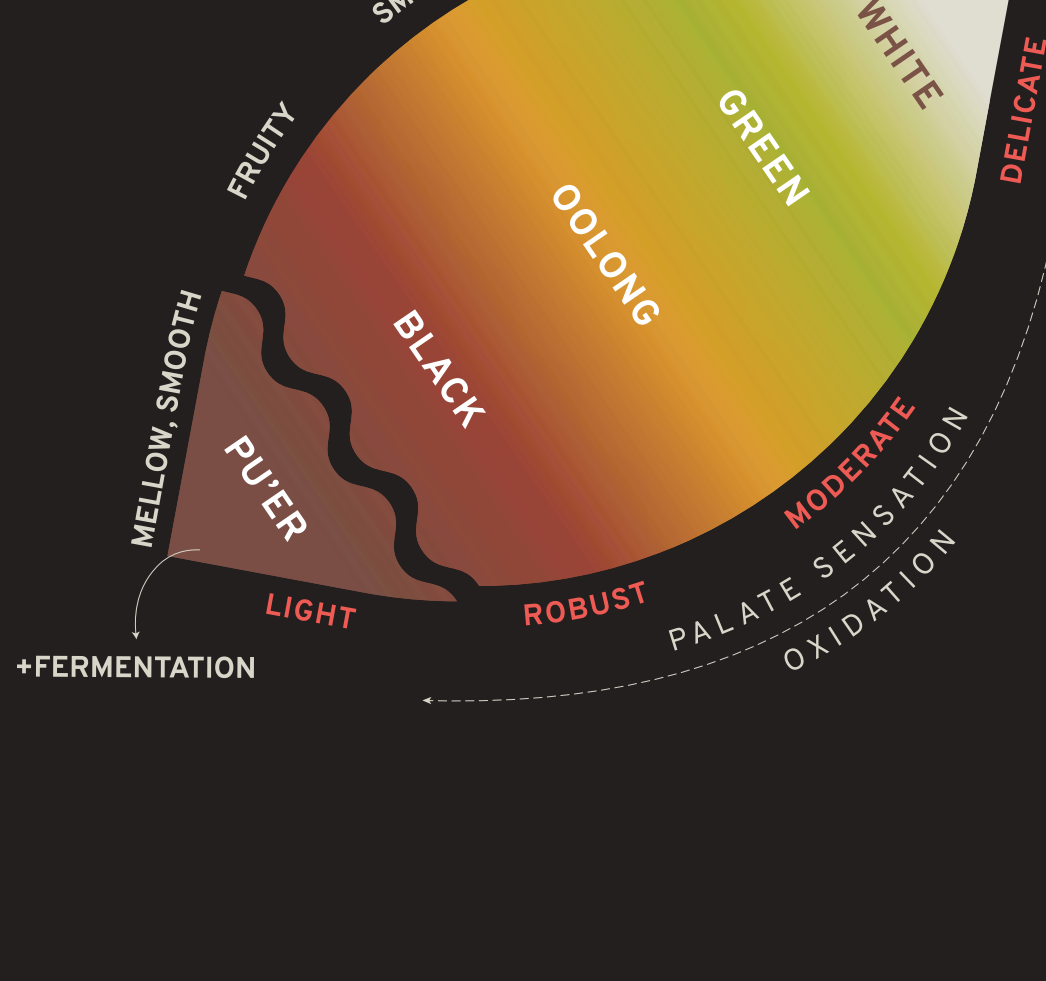


Browning caused by chemical reactions from exposure to oxygen, after being cut and bruised.

Oxidation affects the flavour, aroma, colour and strength of tea.

But to add to the fun – cultivar, terroir and method of processing etc. also affect how tea tastes.

To figure out what you might like, have a look at this Beca Oxidized Tea Leaf Chart that describes the general taste profiles of the teas offered on our menu.



## TEA REBEL'S TOP 7 PICKS

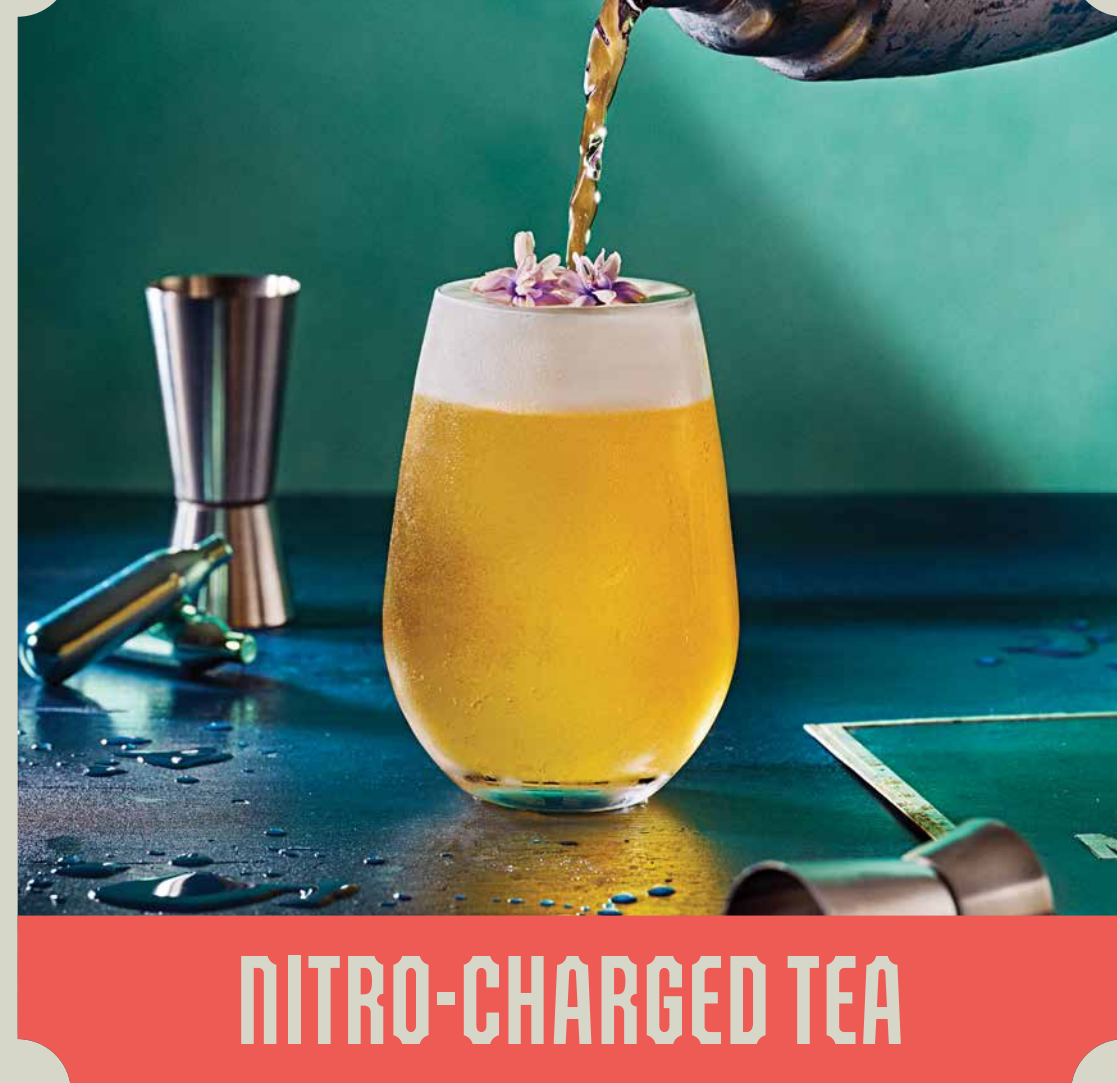
SIGNATURE PURE TEA



### Amber No. 04

Cold-brew Musk Orchid Oolong Tea

CUP 8.90 1-LITRE BYO 17.60



### NITRO-CHARGED TEA

Please check with our baristas for the brews of the day

CUP 11.90-14.90

TEA FOR COFFEE & WHISKY LOVERS



### PURE MILK TEA

Deep Smoke

### Lapsang Souchong Coconut Pure Milk Tea <sup>D</sup>

Lapsang Souchong Tea, Air-dried Coconut, Milk

CUP 14.90 +OATMILK +2.00



### BOTANICAL INFUSION | TEA

Floral-Fruity

### Elderflower Fairy

Cold-brew Goddess No. 02 | Green Tea, Apple, Elderflower, Mint

CUP 11.90

CAFFEINE-FREE



### BOTANICAL INFUSION | TISANE

Come under the Earthy-Floral-Fruity spell!

### The White Witch

Cold-brew Lavender Infusion, Elderflower, Young Ginseng Root, Soursop, Pear

CUP 16.90

FRUIT-FORWARD



### JUICE-TEA COOLER

100% Yuzu Juice

### Honeydew Passion

Cold-brew Goddess No. 02 | Green Tea, Honeydew, Yuzu, Passionfruit

CUP 14.90



### LOCAL FAVOURITE

### Signature Teh Tarik\* <sup>D</sup>

Black Tea, Evaporated Milk, Condensed Milk

HOT 5.90 ICED 6.90

### Chewable Add-ons:

+2.00 Coconut Konnyaku Jelly, Stevia

+2.00 Grass Jelly, Stevia

+2.00 Sago Pearls

+2.00 Aiyu Jelly

Available for all drinks

<sup>D</sup> Contains Dairy \* Sugar in Condensed Milk

<sup>□</sup> Indicates Tea Type & Profile <sup>☼</sup> Tisane

All prices listed are in Ringgit Malaysia (RM). Images are for illustration only.

Tap anywhere to order



# FOR THE PURISTS

From Our Secret Stash Collection

Purist Cold-brew Teas & Tisanes.

SIGNATURE PURE TEA



**Chewable Add-ons:**  
 +2.00 Coconut Konnyaku Jelly, Stevia  
 +2.00 Grass Jelly, Stevia  
 +2.00 Sago Pearls  
 +2.00 Aiyu Jelly

Available for all drinks

## Amber No. 04 Cold-brew Musk Orchid Oolong Tea

CUP 8.90 1-LITRE BYO 17.60

# NITRO-CHARGED TEAS & TISANES

Please check with our baristas for the brews of the day

VERY LIGHT, PURE TASTE



100% Yuzu Juice

## Yuzu Sencha ☉

Cold-brew Japanese Sencha infused with 100% pure Yuzu juice air-flown, chilled from Koichi Japan

CUP 13.90

CAFFEINE-FREE



100% Yuzu Juice

## Petal Tonic ☼

Cold-brew Chrysanthemum Buds Infusion, Dandelion, 100% pure Yuzu juice air-flown, chilled from Kochi, Japan, Pure Honey

CUP 14.90

Tap anywhere to order

☉ Contains Dairy

☐ Indicates Tea Type & Profile ☼ Tisane

All prices listed are in Ringgit Malaysia (RM). Images are for illustration only.

# PURE MILK TEAS

A truer taste.



Floral

## Moonlight Jasmine Pure Milk Tea ☉

Moonlight Jasmine Tea, Milk

CUP 11.90 +OATMILK +3.00



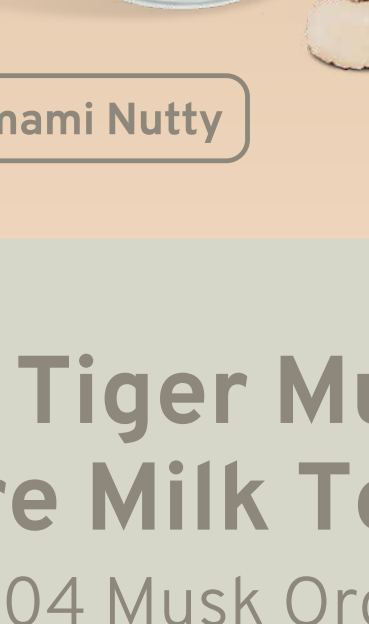
Vegetal-White Orchid

## Jade Oolong Pure Milk Tea ☉

Jade Oolong, Milk

CUP 14.90 +OATMILK +2.00

DELIGHTFUL SUPERFOOD!

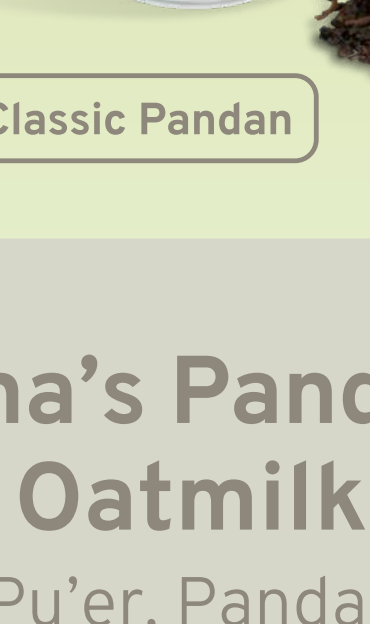


Fruity-Umami Nutty

## Tiger Mum Pure Milk Tea ☉

Amber No. 04 Musk Orchid Oolong Tea, Tiger Milk Mushroom, Blood Peach, White Peach, Goji Berry, Red Date, Milk

CUP 17.90 +OATMILK +2.00



Earthy, Classic Pandan

## Godma's Pandan Pu'er Pure Oatmilk Tea ☉

Yunnan Pu'er, Pandan, Oatmilk

CUP 14.90

TEA FOR COFFEE & WHISKY LOVERS



Deep Smoke

## Lapsang Souchong Coconut Pure Milk Tea ☉

Lapsang Souchong Tea, Air-dried Coconut, Milk

CUP 14.90 +OATMILK +2.00

SIGNATURE BLEND



Malty-Fruity

## Tuxedo No. 05 Pure Oatmilk Black Tea ☉

Yunnan Pu'er, Pandan, Oatmilk

CUP 14.90

Tap anywhere to order

☉ Contains Dairy

☐ Indicates Tea Type & Profile

All prices listed are in Ringgit Malaysia (RM). Images are for illustration only.

# BOTANICAL INFUSIONS | TEA

Drink Tea or Tisane. Not 18.5 teaspoons of sugar.



Floral-Fruity

## Elderflower Fairy ☘

Cold-brew Goddess No. 02 | Green Tea, Apple, Elderflower, Mint

CUP 11.90

5TH-GEN'S FAV



Refreshing-Fragrant

## Emon Musk ☘

~Emon is lemon without L Cold-brew Amber No. 04 | Musk Orchid Oolong Tea, Pure Honey, Perfume Lemon

CUP 13.90

YES, WINE NOT?



Earthy-Fruity

## Wine Not ☘

Cold-brew Tuxedo No. 05 | Black Tea, Pear, Mulberry, Blueberry, Grapes, Osmanthus Jelly, Key Lime

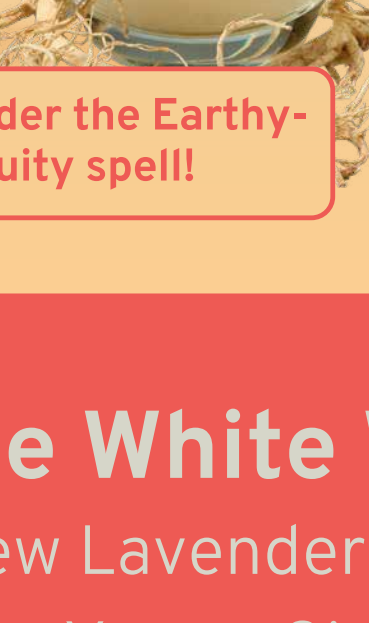
CUP 13.90

**Chewable Add-ons:**  
 +2.00 Coconut Konnyaku Jelly, Stevia  
 +2.00 Grass Jelly, Stevia  
 +2.00 Sago Pearls  
 +2.00 Aiyu Jelly

Available for all drinks

# BOTANICAL INFUSIONS | TISANES

CAFFEINE-FREE



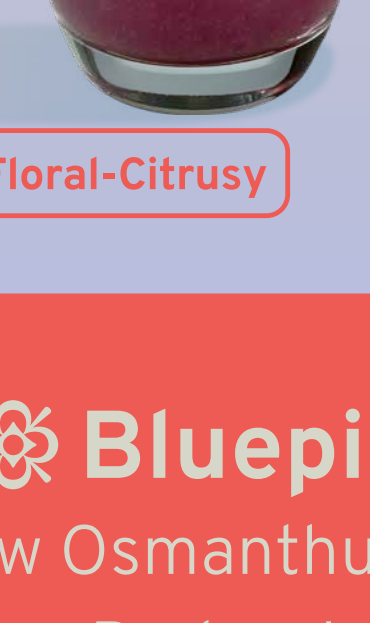
Come under the Earthy-Floral-Fruity spell!

## The White Witch ☼

Cold-brew Lavender Infusion, Elderflower, Young Ginseng Root, Soursop, Pear

CUP 16.90

CAFFEINE-FREE



Musky-Floral-Citrusy

## Bluepink ☼

Cold-brew Osmanthus Infusion, Pink Guava, Barley, Lemon, Blue Pea Flower, Osmanthus Jelly

CUP 13.90

Tap anywhere to order

☐ Indicates Tea Type & Profile ☼ Tisane

All prices listed are in Ringgit Malaysia (RM). Images are for illustration only.



# JUICE-TWA COOLER

Put Quality into your body.

FRUIT-FORWARD



Kickass-Fruity

100% Yuzu Juice

## Honeydew Passion

Cold-brew Goddess No. 02 | Green Tea, Honeydew, Yuzu, Passionfruit

CUP  
14.90

Tap anywhere to order

☐ indicates Tea Type & Profile

All prices listed are in Ringgit Malaysia (RM). Images are for illustration only.

# TEH TARIK & FRIENDS

Local Favourites

Not your grandfather's tea.



■ **Signature Teh Tarik (Hot)\* ☐** 5.90

Black Tea, Evaporated Milk, Condensed Milk



■ **Signature Iced Teh Tarik\* ☐** 6.90

Black Tea, Evaporated Milk, Condensed Milk



■ **Teh C Kosong (Hot) ☐** 5.50

Black Tea, Evaporated Milk



■ **Teh C (Hot) ☐** 5.50

Black Tea, Evaporated Milk, Stevia



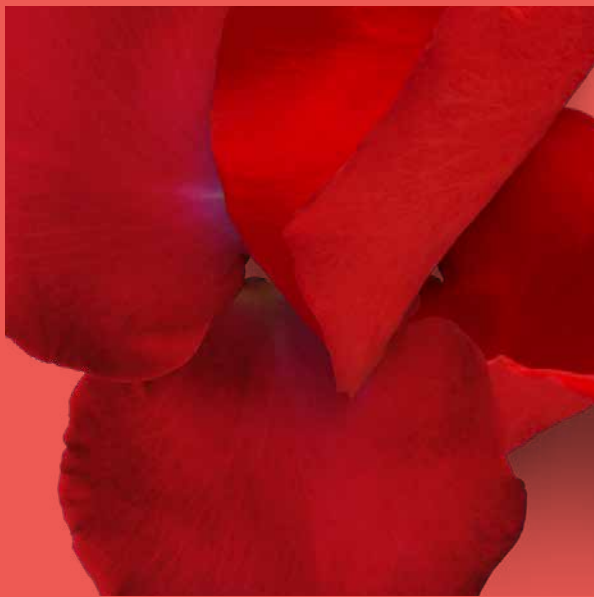
■ **Chai Masala for the Gods\* ☐** 7.90

Freshly-ground premium spices



■ **Teh Halia Zingy\* ☐** 7.90

Freshly-squeezed ginger, not powder



■ **Teh Tarik Eden Rose\* ☐** 8.90

Rose petals, pure extract of rose

ICED +2.00



■ **Teh Tarik Pandan Perky\* ☐** 7.90

Pandan leaves, pure extract of pandan



■ **Teh Arab Pudina\* ☐** 7.90

Fresh-crushed Danish mint, pure extract of mint

LIKE DRINKING AFTER EIGHT!

# THE BLACK SHEEP

Local Favourites

Kopi roasted over a wood fire in small batches in Melaka, Malaysia, and then cold-brewed.

There is no picture of the Black Sheep because black sheep do not deserve to be photographed.

- **The Black Sheep No. 1** CUP 5.90  
Cold Brew Kopi O Kosong †  
Woodfire-roasted Coffee
- **The Black Sheep No. 2** 6.50  
Cold Brew Kopi O †  
Woodfire-roasted Coffee, Stevia
- **The Black Sheep No. 3** 6.90  
Cold Brew Kopi C † ☐  
Woodfire-roasted Coffee, Evaporated Milk, Stevia

Tap anywhere to order

☐ Contains Dairy \* Sugar in Condensed Milk † Sugar in Roasted Coffee

☐ indicates Tea Type & Profile ● Coffee

All prices listed are in Ringgit Malaysia (RM). Images are for illustration only.

